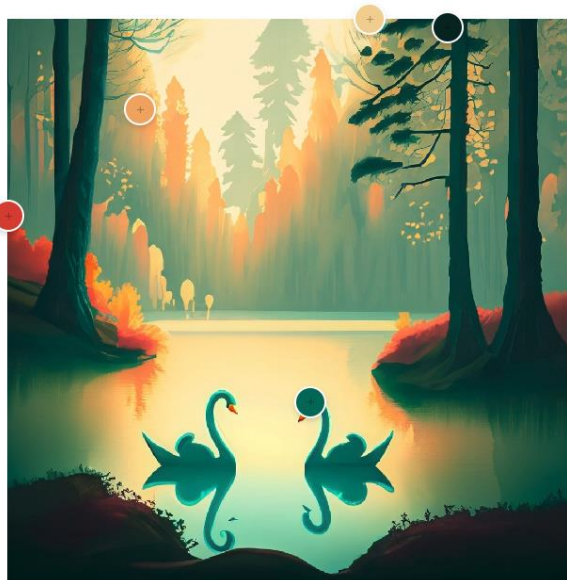


# Ffion Isaacs – Six Swans Mood Board

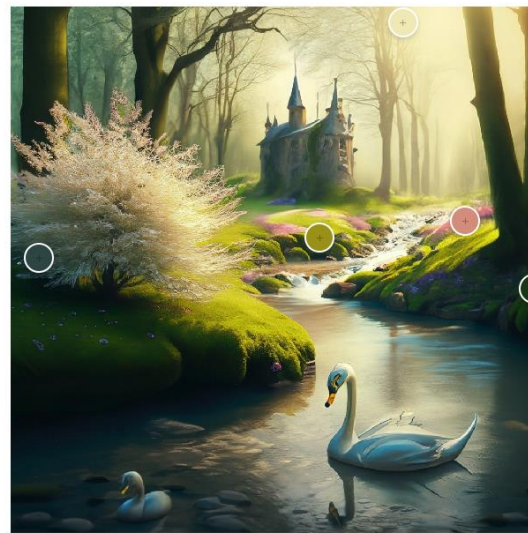
We have started looking at colour ways and ideas for your backdrop. Below are three simple ideas for a discussion starter. The number of swans can be added/removed and if preferred we have a couple free standing to be best placed to set off your model and set design.

Your costume design images are white/cream with blue and green. The first design is one that would compliment these choices with it's autumnal hues. The second is possibly a little more eerie and dark as you wanted a witchery feel but still light woods. The third option is more of a spring meadow feel.

Please don't feel limited by these designs, as we can take elements from each or none at all and come up with more ideas with your thoughts, tweaks and suggestions.



#032623 #02735E #F2D49B #F2AA6B #D94436



#334E4C #194013 #D99886 #A69C17 #F3ECBD



#5890A6 #627327 #BCBF60 #D9CB89 #A65729